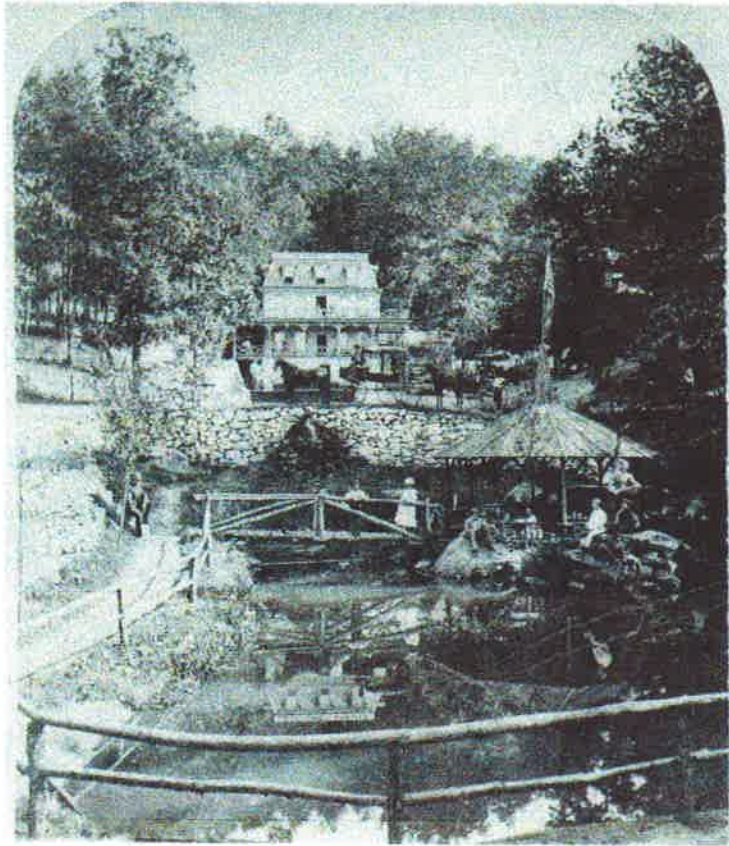


LOVING LECHAUWEKI FUND



**THIS IS YOUR CHANCE TO SUPPORT THE REVITALIZATION OF
LECHAUWEKI SPRINGS PARK.**

FOR MORE INFORMATION ON THE PARK, CHECK IN TO THE LOVING LECHAUWEKI FACEBOOK
PAGE.

DONATIONS ARE BEING ACCEPTED AT FOUNTAIN HILL BOROUGH HALL OR THROUGH MAIL TO:

LOVING LECHAUWEKI

FOUNTAIN HILL BOROUGH HALL

941 LONG STREET

FOUNTAIN HILL, PA 10015

CHECKS SHOULD BE MADE PAYABLE TO "BOROUGH OF FOUNTAIN HILL " WITH A NOTATION THAT THE
AMOUNT LISTED SHOULD BE DEPOSITED IN THE LOVING LECHAUWEKI FUND.

THIS FUND DRIVE HAS BEEN APPROVED BY THE BOROUGH COUNCIL OF FOUNTAIN HILL